



# Installation Guide – Invisily Windows Client

## Table of Contents

1	Introduction .....	3
2	Requirements .....	3
2.1	Hardware .....	3
2.2	Software .....	3
3	Prerequisites .....	3
3.1	Dot Net Framework .....	3
4	Install .....	3
5	Run .....	5
6	Uninstall .....	5
7	Troubleshoot .....	6

# 1 Introduction

This document will guide you to install Invisily Client on Windows devices.

## 2 Requirements

Following are the hardware and software requirements:

### 2.1 Hardware

- Processor: Minimum 2+ GHz Dual Core x86
- Memory (RAM): 4 GB

### 2.2 Software

Supported Operating Systems:

- Windows 10 (32/64 bit)
- Windows 11 (32/64 bit)
- Windows Server 2012 (64 bit)

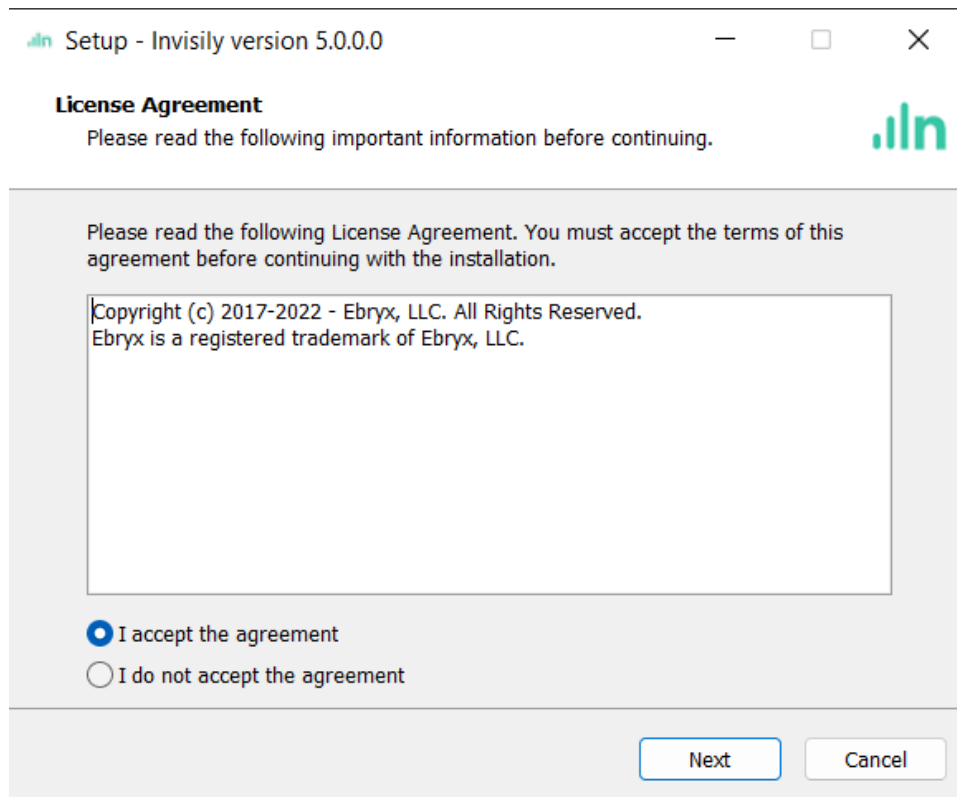
## 3 Prerequisites

### 3.1 Dot Net Framework

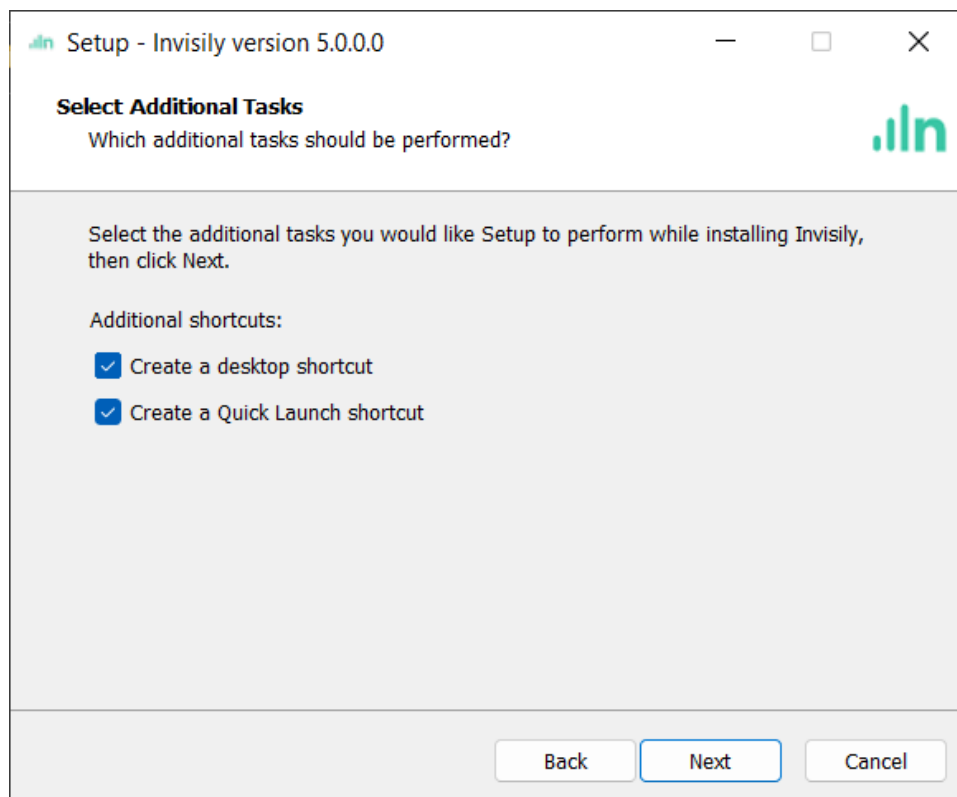
Invisily client requires Dot Net Framework Redistributable v4.6.1 for MFA related functionality. It can be downloaded from [here](#).

## 4 Install

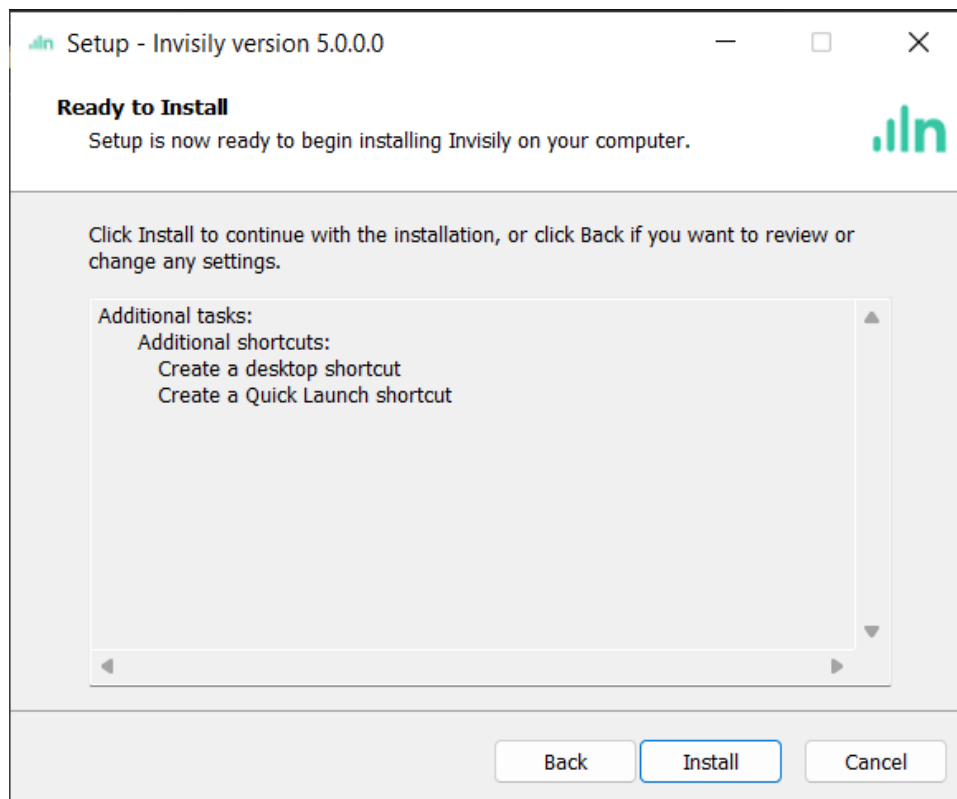
1. Extract the installer (**invisily\_client.exe**) from the compressed ZIP file.
2. Double click on the installer and click on **Yes**. (Note: Only one instance should be installed on one machine. Make sure that any previous installation is uninstalled before proceeding with the new one.)
3. The installation wizard will start, click **Next**.



4. On the next screen, select the shortcut you need and click **Next**.



5. On the next screen, verify and click **Install**.



6. After the Installation step is complete, click **Finish**.

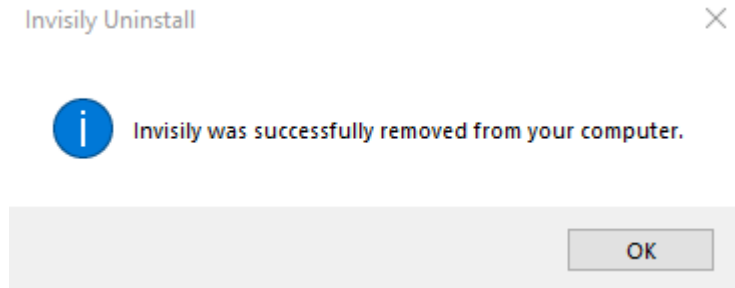
## 5 Run

1. Run “**Invisily Client**” by shortcut from (Desktop or Start Menu).
2. Enter your credentials and click **Login**.
3. On successful login, the services list will be displayed.

## 6 Uninstall

1. Go to **Start menu** → **Invisily Uninstall**, right click on **Uninstall** and select **Run as Administrator** or go to the **Control Panel** → **Uninstall a program** → **Invisily Client** → **Uninstall**.
2. Popup notification will show up asking for the user to confirm **Uninstall**.

3. After the **Uninstallation** is complete, the user will be notified with another popup notification.



## 7 Troubleshoot

The log files are maintained at this path:

`C:/Program Files (x86)/Invisily/logs`